

---

# **UPSmart2000I**

## **UPS Monitoring Software**

### **User's Manual**

**Apply to the following operation Systems**

**Microsoft Windows 98**

**Microsoft Windows NT**

**Microsoft Windows 2000**

**Microsoft Windows Me**

**Microsoft Windows XP**

**Microsoft Windows 2003**

**Microsoft Windows Vista**

---

# Introduction

UPSmart 2000I is a smart UPS monitoring and controlling software applied to RS-232 and USB port. When the Mains is normal, UPSmart 2000I displays the status of UPS (e.g. input & output voltage, frequency, load, temperature and battery capacity ect.) in digital,graphic and Real-time data curve, which help the user monitor the quality of power supply; When the Mains break off or UPS battery low, UPSmart 2000I will perform its monitoring function without people around. It will automatically save records, shut down systems in security. And in addition it add more possible means to aumatically send the warnning message, including emial sending ect., which make the user no need to worry about any systems or file lost during the Mains off.

Function:

- Support DB9 and USB connection
- Auto monitor when turn on UPS
- Auto test equipment connection
- Real-time display UPS status in digital,graph and data
- Be convenient for the user to set up partial function as user like
- Be convenient to perform UPS and system in schedule witout people around
- Make UPS operating data in records
- Auto email events notification
- Set up auto on/off time
- Set up off countdown time and the interval of each warning
- Set up UPS self-testing time
- Auto close program and files saved before system auto off
- Auto save files when turn off UPS

## contents

Introduction .....	2
System requirement.....	3
UPSmart2000I installation and uninstal.....	3
Hardware installation .....	3
UPSmart2000I installation.....	3
Startup UPSmart2000I .....	4
Uninstall UPSmart2000I .....	4
Operation Instruction .....	5
Main screen instructions .....	5
Schedule .....	6
Parameter setting.....	7
History event.....	9
History data.....	9
Event log .....	9
UPS CONTROL .....	10
Close Files.....	10
About.....	11

---

# System requirement

## 1. Hardware requirement:

1. Computer system RS 232 communication interface: COM1~COM4;
2. Standard day contact (DB9) or USB interface UPS ( take appendix as reference)

## 2. Operation system:

The computer for monitoring should install Windows 98/NT/2000/Me/XP/2003/Vista operation system

# UPSmart2000I installation and uninstall

## Hardware installation

For user who use RS-232 port

1. Connect the cable public end to the UPS port
2. Connect the cable bus end to the system communication port RS-232, if the system only has 25PIN communication port, the users can use the adapter of 9PIN against 25PIN for connection.

For user who use USB port

Just need to connect computer with UPS by special USB communication cable

## UPSmart2000I installation

1. Double click the setup.exe file to start up UPSmart2000I installation procedure, follow the installation instruction, enter installation series number, choose the way to install the software, then click next step to finish the installation.
2. Please note that the user should firstly enter using super administrator status. And install the software on Windows XP, NT 4.0/2000 and Server 2003 environment.



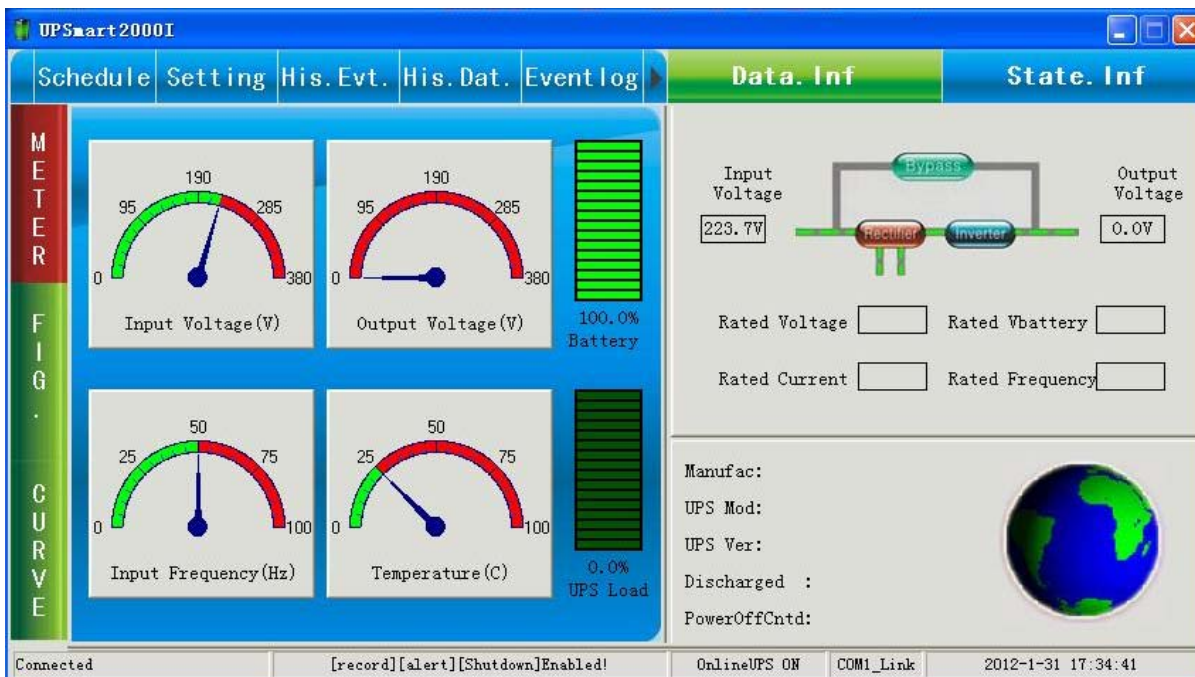
# Startup UPSmart2000I

1. After installation, the window come here below,



2. Note that under Windows Operator system, the software will automatically start up when user login.

3. After startup, the main window is here below.



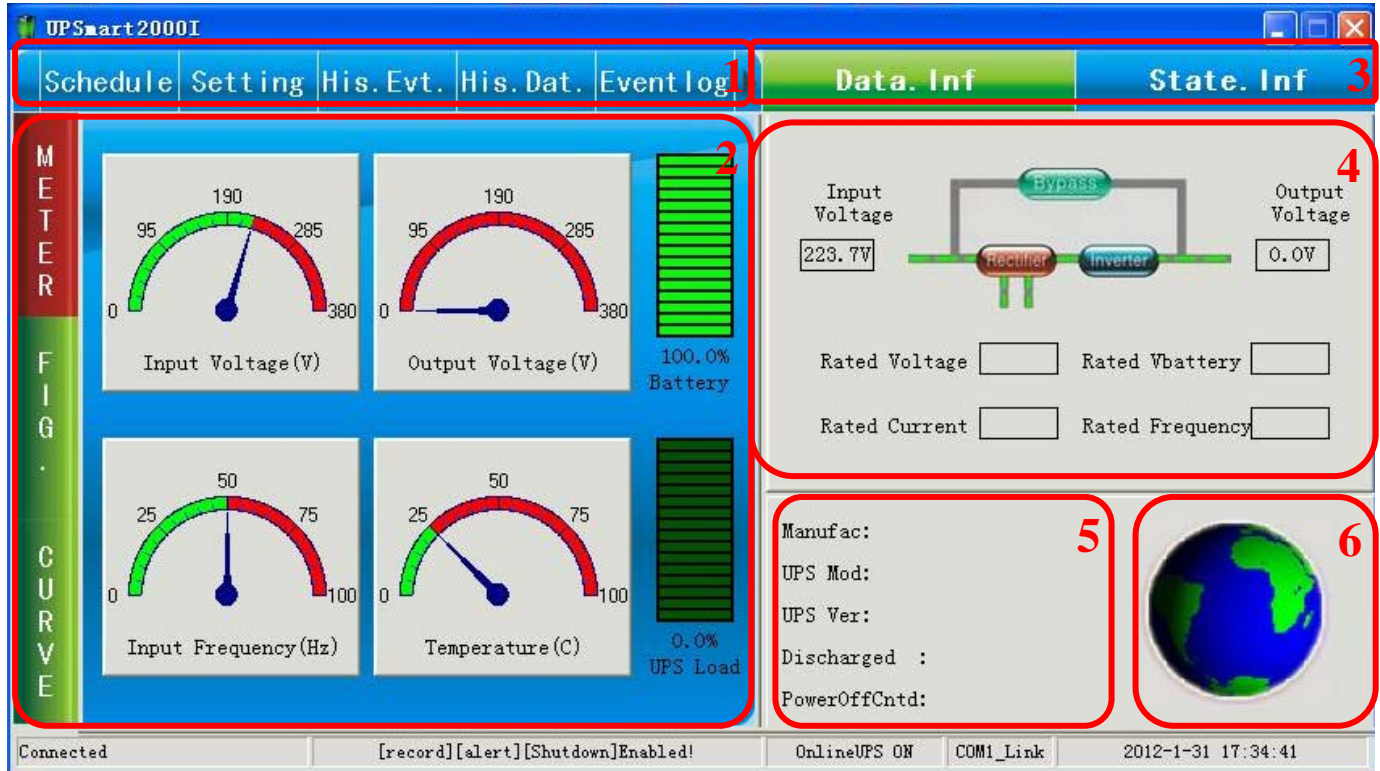
# Uninstall UPSmart2000I

If user want to uninstall this UPSmart2000I, please choose the item of "Uninstall UPSmart2000I" in the program group of UPSmart2000I, and then confirm "OK".

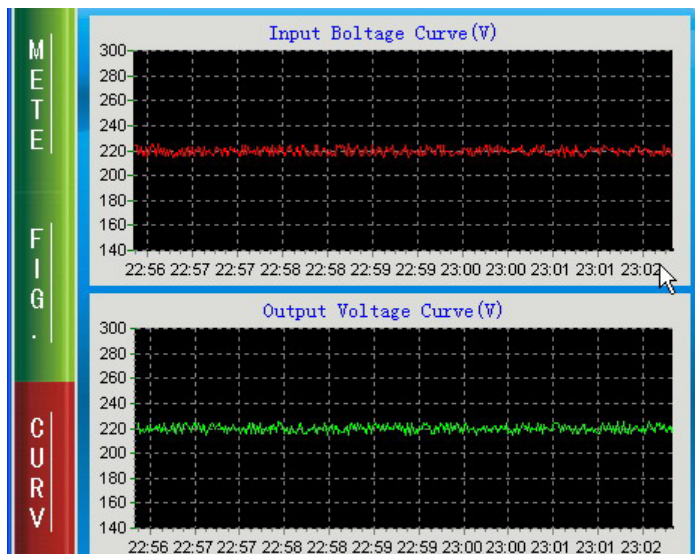
# Operation Instruction

## Main screen instructions

After entering UPSmart2000I monitor program, user can see interface as below.



1. Function Select Area: After the installation had complete, user can set parameter value of all function in accordance with their need, please follow instruction as below.
2. Status Area. After UPSmart2000I start, user can check whether UPS connect well with UPS via Newsletter normal / abnormal



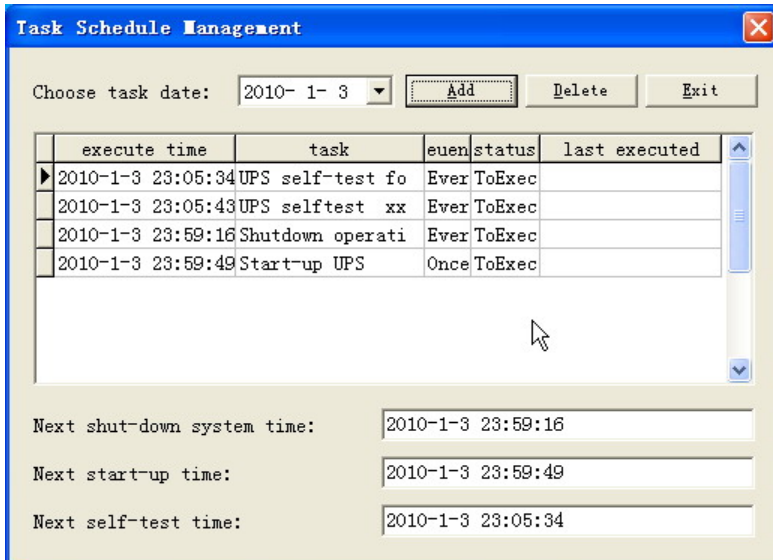
3. UPS Block Diagram or UPS runtime status select: User can select to show UPS Block Diagram or UPS runtime status display area.

4. UPS Block Diagram or UPS runtime status display area. In block diagram, User can check whether UPS work normal, status of power supply (AC, UPS) and other related information of UPS.
5. UPS base information area.
6. UPS connection status.

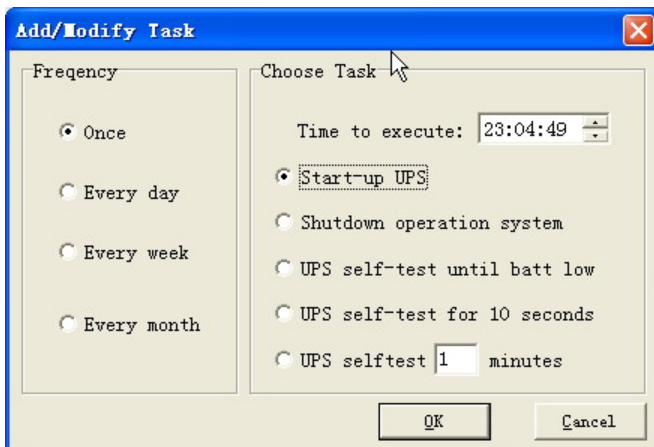
## Schedule

UPSmart2000I can set time of UPS startup/shutdown and self-test, so it's unmanned, system can play the function of automatic on/off according to the setting time.

### 1. Daily setting



### 2. Working daily



- Task
  - Start UPS
  - Close operating system and turn off UPS
  - UPS self-test, alarm when battery low voltage
  - UPS self-test 10sec
  - UPS self-test Nmin
- Frequency
  - once
  - a day
  - a week

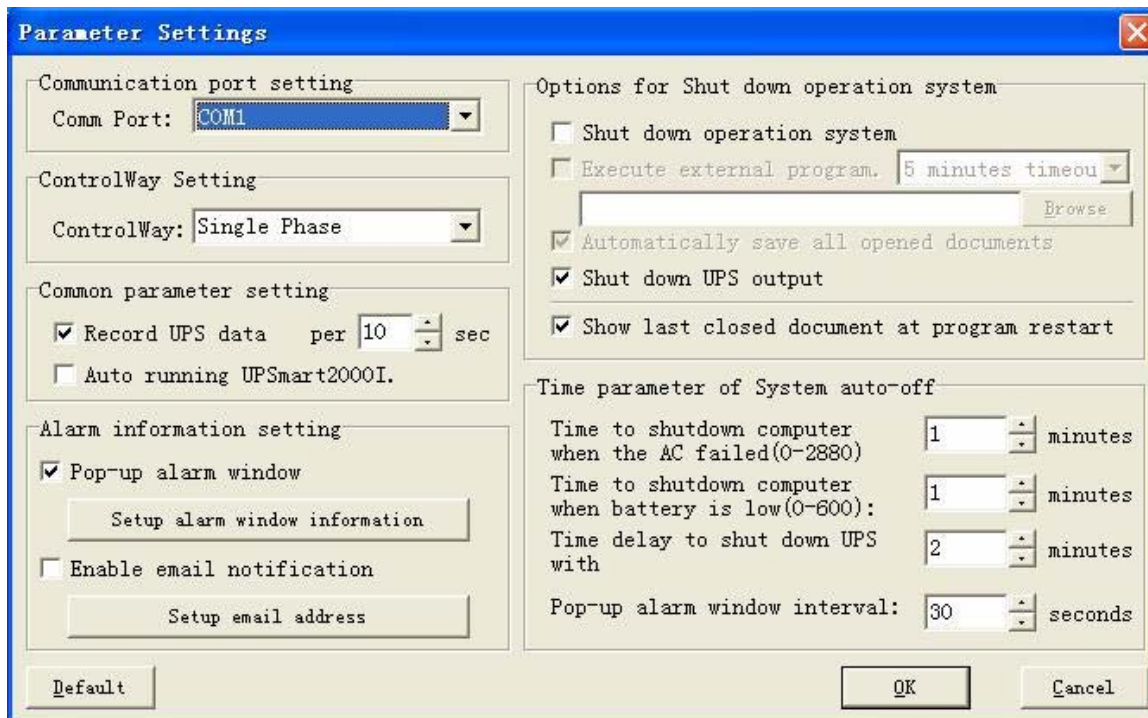
- a month

Setting method: select “Scheduling” from Function Menu, press “Selection” on the upper-left corner and set date of schedule, then click “Add” to enter setting screen of “Work Schedule”, after select task and frequency, click “Confirm” and back to the setting screen of “Daily Setting”, you can find the newly added schedule, if you want to add other work schedule, please repeat the above, if you want to delete schedule, please select “Schedule Item”, then press “Delete”.

**Note:** Because the restart UPS command is been send by the stop UPS command, so if you want to set restart UPS method please set stop UPS method first.

## Parameter setting

After entering screen of parameter setting, you can set parameter values of various function.



### Specific Functions

1.Port setting: User can switch between serial port and USB

2.ControlWay setting: User can switch between single phase monitor and three phase monitor.

freely.

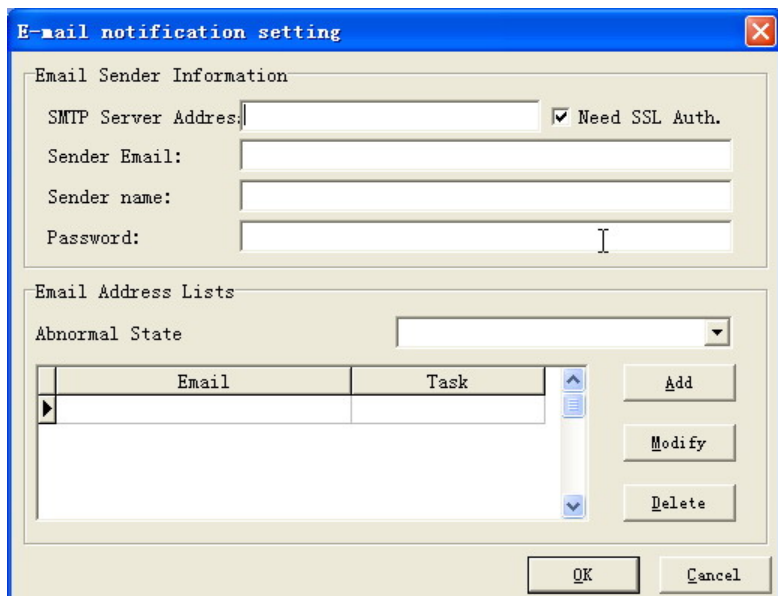
3.Public parameter setting: User can choose whether to record real-time date of UPS, if yes, how long of the record interval. This enables users to query at all times

4.Broadcast information setting: user can set UPSMART 2000I software how to warn when UPS abnormal.

After user set in this area, when UPSMART 2000I software detecting anomaly, it will send warning message by “Pop-Up Alarm Window”, “Send Email” etc

Pop-Up Alarm Window: user can set that when UPSmart2000I detecting AC off, battery low voltage or UPS shutdown sign, whether show those warning message on computer screen to let themselves know that. Also warning message text can be default one, or changed by user. (Picture as below)

Enable sending Email function: user can set that when UPSmart2000I detecting AC off, battery low voltage or UPS shutdown etc, warning message will send by email. Setting mode and setting screen as below:



Firstly, user choose alarm by sending Email, then click on the Add button and write his/her Email adress, after that, customer can receive a mail title as selected abnormal position when UPS abnormal.

5.Setting of shutdown computer system program: user can set the work should be performed before shutdown.

This area is to set up the function which need to execute when UPSmart2000I sense the off signal. The user can fix if each function will be excuted or not.

External command executed before system shutdown: The user goes his way to set up the executed procedure name before system shutdown.(Insert compelte route and file name)

Note: If the executed procedure can not automatically remove, Windows and UPS would not be turned off.

Auto saving all the open file: Before system shutdown, set up to automatically save all the open procedure and file. If the working file is not named, UPSmart2000I will automatically name it as TEMP and keep (eg.:~Wnnnn.TMP). The closed file name can be checked in the "The application procedure saved in last shutdown' in Function Menu.

Note: UPSmart2000I will try to use artificial intelligence way to close the familiar application procedure and save file. But it could not make sure all the application software would be saved normally.

Shutdown operation system: To set up to close the operation system itself.

Close up UPS output: To set up to cut off UPS power

Note: When system and UPS power is off, please don't cut off power switch. Otherwise when the Mains power recover, UPS and computer will not restart automatically).

Show last closed document at UPSmart2000I restart: If "Auto save file" has been set up to execute in last shutdown, UPSmart2000I will display the closed file information when restart the system

6.Setting of time parameter for auto shutdown system: user can set time of UPS shutdown when AC power off or battery low voltage.

This setting is to make system shut down when the power is abnormal or before UPS low battery to make sure the system can restart and work normally.

When Mains faults, get to start shutting down calculator systems after this time: Set up the battery backup time after Mains faults. Please refer to UPS manual or consult with UPS manufacturer before setting

Setting range : 0~2880 minutes

Value preseted: 10 Mintues

When battery low, get to start shutting down calculator systems after this time: Set up UPS backup time when battery low, suggest the setting value smaller better

Setting range: 0~600 minutes

Vaule preseted: 1 minutes

Pop-up alarming message interval: Set up the interval of pop-up alarm message

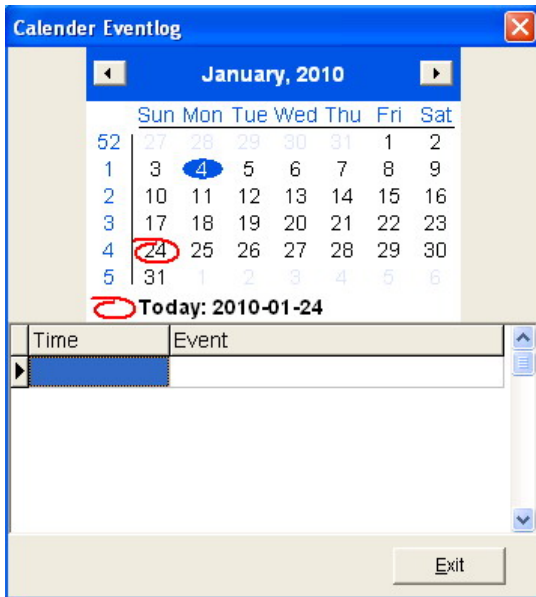
Setting range: 10 ~600 seconds



Value preseted: 30 seconds

## History event

User can click the calendar date to see what special event has happened on that day.



## History data

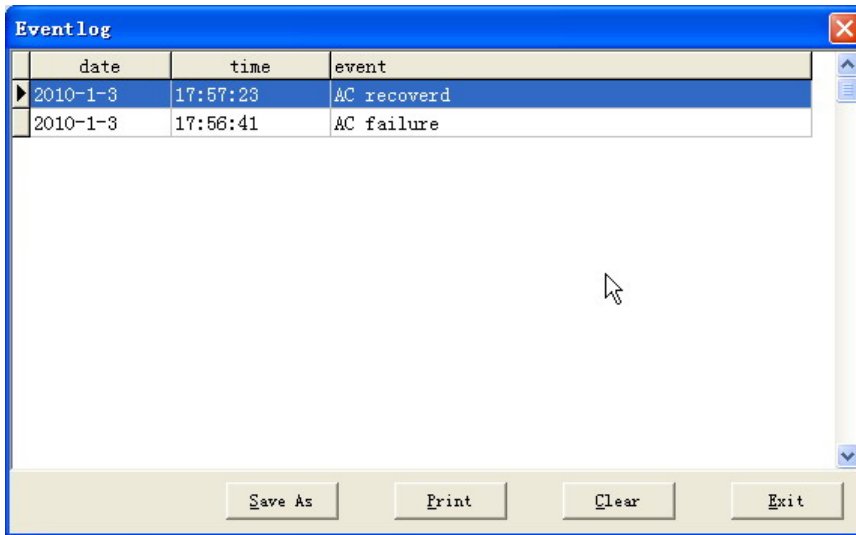
The information of UPS input voltage,output voltage, frequency, load, battery capacity and temperature etc., can be recorded in the data log,the user can revise interval time in “recorde UPS data” column which is in parameter setting screen, and the record will be cleared away if clicking “ Delete”.

The screenshot shows a window titled "History data records" with a table of UPS data records. The table has columns: Time, InputVolt, feuen, OutputVolt, UPS Load(%), Batt. Volt, perat, and UPS Status. The data shows various readings over time on 2010-1-3. Below the table are buttons for "Save As", "Print", "Clear", and "Exit".

Time	InputVolt	feuen	OutputVolt	UPS Load(%)	Batt. Volt	perat	UPS Status
2010-1-3 22:59:12	220.4	48.3	219.1	90	10.6	34.3	00001000
2010-1-3 22:58:42	217	48.1	221.9	20	10.7	27.1	00001000
2010-1-3 22:58:12	215.6	49.3	218.2	30	11.3	26	00001000
2010-1-3 22:57:42	217.4	48.3	217.2	11	11.6	26.4	00001000
2010-1-3 22:57:12	217.9	48.5	222.5	46	10	31.9	00001000
2010-1-3 22:56:42	215.2	47.7	217.8	37	11.9	33.6	00001000
2010-1-3 22:56:12	217.7	47.7	218.1	10	10.7	28.7	00001000
2010-1-3 22:55:42	223.8	48.5	215.4	35	12.2	32.6	00001000
2010-1-3 22:55:12	221.4	48.9	217.4	18	11.4	27.2	00001000
2010-1-3 22:52:09	216.9	48.9	219.6	13	10.3	34.5	00001000
2010-1-3 22:51:39	222	47.9	222.8	20	11.6	33.8	00001000
2010-1-3 22:51:09	219	48.7	222.1	38	11.4	27.8	00001000
2010-1-3 22:50:39	220	50	220	0	12	29	00001000

## Event log

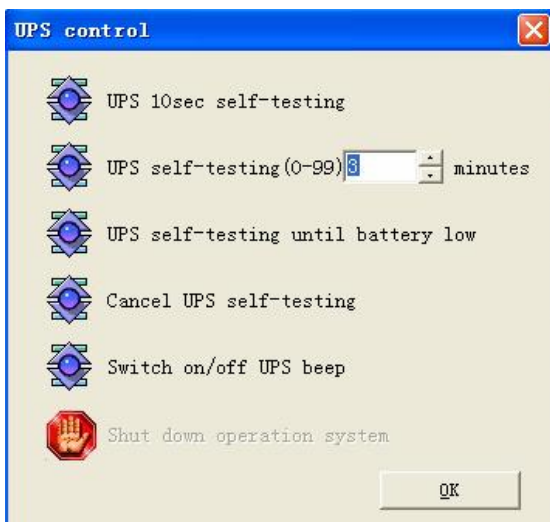
User can find the date,time and description of event in log file.



## UPS CONTROL

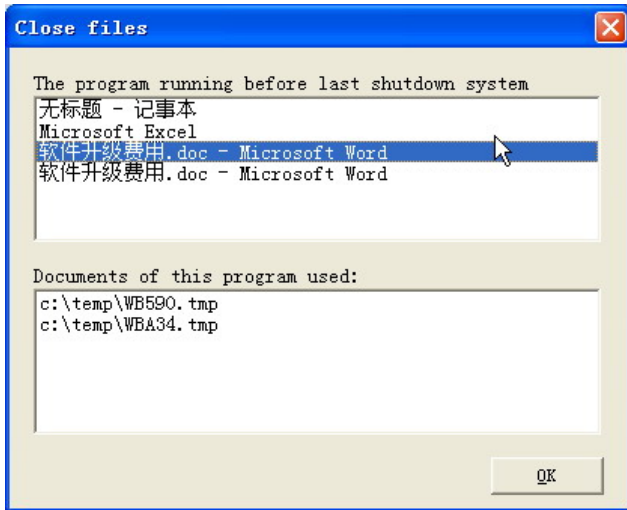
If want the UPS to work according to the command, please select the relative command directly, and then UPS will do the following test:

- UPS self-detect for 10 seconds
- UPS self-detect for 1-99 seconds
- UPS self-detect to battery voltage low alarm predictly
- cancel self-detect
- Switch on/off UPS beep
- shut down operation system



## Close Files

Record of file name and file adress that not closed before last shutdown.



## About

Display copyright and installation information.

